

WiFi数据采集棒

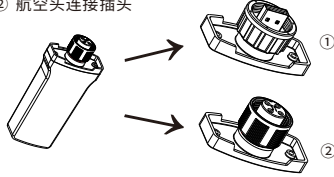
使用手册

产品介绍

WiFi数据采集棒是爱士惟自主研发的智能数据采集设备,负责采集光伏逆变器工作数据,并上传云端。

采集棒按照与逆变器的连接方式,分为两种:

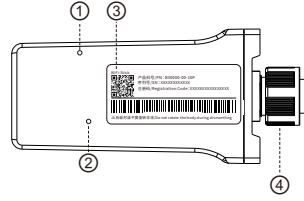
- ① USB 连接插头
- ② 航空头连接插头



产品特性

- 远程固件升级
- 网络诊断
- LED指示
- 即插即用
- 断点续传
- IP65防护

产品指示



- ① 蓝色LED:网络通讯指示
- ② 绿色LED:逆变器通讯指示
- ③ 产品标签:产品信息展示
- ④ 连接插头:连接到逆变器

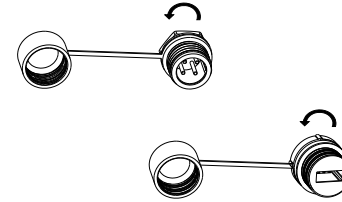
注:LED只有在采集棒上电工作后才会点亮显示。

包装清单

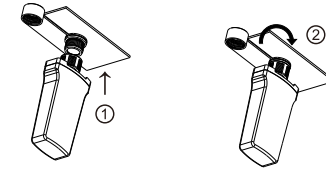
编号	名称	数量
1	WiFi数据采集棒	1
2	使用手册	1

安装说明

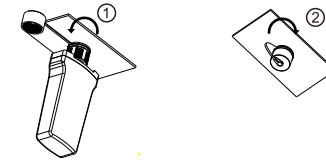
首先逆时针拧掉逆变器上对应的防尘帽。



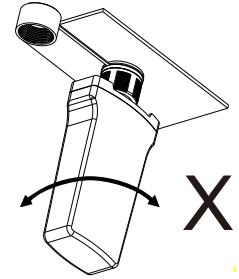
插入数据采集棒,再沿顺时针方向拧紧浮动螺母,如下图所示。



拆卸数据采集棒时,请按下图所示逆时针旋转浮动螺母,数据采集棒取下后请锁上防尘帽,保证逆变器防护。



注意:安装或拆卸数据采集棒时,请勿握住采集棒本体旋转。



注:安装逆变器时,请尽量靠近路由器20m以内,以保证信号良好。

WiFi-Stick

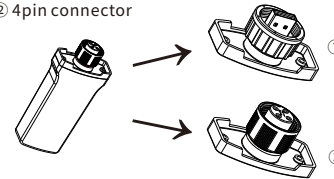
User Manual

Product Introduction

WiFi-Stick is a wireless communication module developed by AiSWEI. It will collect the operating data of the inverters and upload the data to the cloud.

According to the connection with the inverter, there are two types of WiFi-Stick:

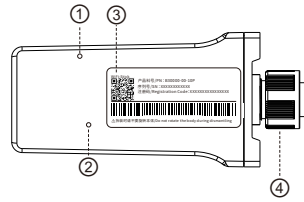
- ① USB
- ② 4pin connector



Product features

- Remote firmware update
- Network diagnosis
- LED indicators
- Plug-in connector
- Automatic resumption of data transmission once network recovering
- IP65 Protection Class

Product Manual



- ① Blue LED: Indicator for network communication
- ② Green LED: Indicator for inverter communication
- ③ Type label: Product information
- ④ Connector: Connection to the inverter

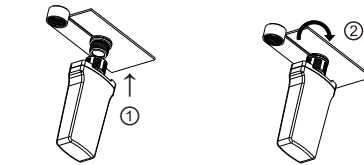
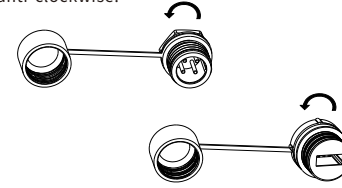
Note: LED will only start working after power on.

Delivery List

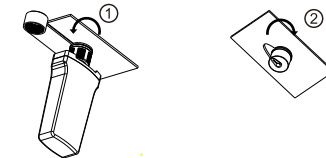
No.	Name	Quantity
1	WiFi-Stick	1
2	User Manual	1

Installation Guide

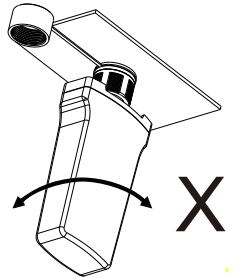
Please remove the anti-dust cap of the connector on the inverter by rotating anti-clockwise.



When removing the WiFi-Stick from the inverter, please unscrew the nut anti-clockwise as shown in the figure below. After removing, please reattach the anti-dust cap on the inverter connector to ensure protection class.



Caution: Please do not rotate the WiFi-Stick main body during installation.



Note: Install the inverter within 20m of the router to ensure good signal.

电站监控

App下载

用户可通过扫描如下二维码下载安装AiSWEI App, 然后进行安装。



Android/iOS

微信公众号

关注微信服务公众号获取更多服务。



配置网络

连接数据采集棒到逆变器, 上电开机。

查看绿色LED灯在快闪模式(WiFi一键配网模式)。此时打开手机App, 点击App首页下方的“监控配置”, 扫描数据采集棒上的二维码即可开始配置网络。

注: 只支持2.4GHz频段网络。

创建账号及电站

打开AiSWEI App, 首页左上方注册账号。注册完毕登陆之后, 点击右上“+”创建电站。具体可参考App操作说明书。

LED指示及故障排除

绿色LED: 逆变器通讯指示

- 绿色LED灯灭: 数据采集棒数据采集端硬件故障, 请联系售后。
- 绿色LED灯慢速闪烁: 绿色LED灯每10秒闪烁一次, 说明采集棒与逆变器通讯正常。
- 绿色LED灯快速闪烁: 采集棒进入一键配网状态, 不采集逆变器数据。

蓝色LED: 网络通讯指示

- 蓝色LED灯灭: 数据采集棒连接路由器异常, 需检查路由器网络名称和密码是否正确; 检查采集棒探测无线信号强度。
- 蓝色LED灯常亮: 设备已经连上云端, 可以在云端建电站查看数据(具体请参考AiSWEI Cloud说明书)。
- 蓝色LED灯闪烁: 设备未连接到云端, 如果当前设备已经连上路由器, 请通过路由器配置界面查看当前设备是否具有连接外网权限。

AP模式配网: 需要连接设备的网络重新写入路由器信息(AiSWEI-XXXX), 密码为设备外壳上注册码。(配网请参考App使用说明书)。

产品质保

感谢您购买爱士惟新能源技术(江苏)有限公司的数据采集棒, 为了更好的为您服务, 在购买本产品后, 请认真阅读、填写并妥善保管好此质保卡。

客户填写内容:

用户名		联系人	
产品名称		购买日期	
序列号			
联系电话			
用户地址			
订单编号			
维修记录	日期	故障原因及处理	

Plant Monitoring

App download

Download the AiSWEI App by scanning the QR code below.



Android/iOS

Network configuration

Connect the WiFi-Stick to the inverter and turn on the DC-switch of the inverter. The green LED on the WiFi-Stick will blink quickly. The WiFi-Stick is now ready for the network configuration. Open the App and click on the “Monitoring settings” on the main page. Scan the QR code on the WiFi-Stick to enter network configuration mode.

Note: Only support network with 2.4GHz bandwidth.

Account registration and plant creation

Open the AiSWEI App and register a new account. After completing the account registration and logon, click on the “+” icon to create plant. Please refer to the App user manual for further details.

LED indicators and troubleshooting

Green LED: Inverter communication indicator

- Green LED turns off: Hardware fault, please contact our service.
- Green LED blinks slowly: Green LED blinks slowly every 10 seconds, the communication between WiFi-Stick and inverter is Ok.
- Green LED blinks quickly: WiFi-Stick enters network configuration mode, Inverter's data collection is disabled.

Blue LED: Network communication indicator

- Blue LED turns off: Connection to the router fails. Please check if the network SSID and password are correct or the wireless signal intensity.
- Blue LED turns on: The device is now connected to the cloud, you could create a power plant on AiSWEI Cloud to monitor the parameters of the plant. (Please refer to the AiSWEI Cloud user manual for further details).
- Blue LED blinks: The device is not connected to the cloud. If the device has been connected to the router, please check whether the device has the permission to connect to the internet via the configuration page of the router.

Note: For AP network configuration work, you need to be connected to the local WLAN network of the device (AiSWEI-XXXX) to reenter the router information. The password for the local WLAN network would be the registration key, which could also be found on the type label. (Please refer to the App user manual for further details on network configuration).

Warranty

Thank you for purchasing the WiFi-Stick product from AiSWEI New Energy Technology (Jiangsu) Co., Ltd. Please keep this warranty card carefully, so that you could enjoy our full-service benefits.

Filled in by the customer:

Customer name		Contact person	
Product name		Purchase date	
Serial number			
Contact number			
Address			
Order number			
Service information	Date	Description of issue and measure	

保修说明

产品若出现质量问题需要保修时, 请将此质保卡与所购数据采集棒一起妥善寄回本公司售后服务处。

注意事项

1. 自您购买本产品签收首日起, 凡按照使用手册安装使用, 在质保期内出现非人为质量问题, 我们提供免费维修。
2. 非本公司产品质量引起的问题, 如使用不当、保管不妥、擅自拆机等原因造成的损坏, 一律不在保修范围内。

联系方式

爱士惟新能源技术(江苏)有限公司
服务热线: 400 801 9996
服务邮箱: service.china@aiswei-tech.com
网址: www.aiswei-tech.com
地址: 江苏省苏州市高新区向阳路198号9栋
(邮编: 215011)

合格证

本产品经检验符合出厂标准

Plant Monitoring

App download

Download the AiSWEI App by scanning the QR code below.



Android/iOS

Network configuration

Connect the WiFi-Stick to the inverter and turn on the DC-switch of the inverter. The green LED on the WiFi-Stick will blink quickly. The WiFi-Stick is now ready for the network configuration. Open the App and click on the “Monitoring settings” on the main page. Scan the QR code on the WiFi-Stick to enter network configuration mode.

Note: Only support network with 2.4GHz bandwidth.

Account registration and plant creation

Open the AiSWEI App and register a new account. After completing the account registration and logon, click on the “+” icon to create plant. Please refer to the App user manual for further details.

LED indicators and troubleshooting

Green LED: Inverter communication indicator

- Green LED turns off: Hardware fault, please contact our service.
- Green LED blinks slowly: Green LED blinks slowly every 10 seconds, the communication between WiFi-Stick and inverter is Ok.
- Green LED blinks quickly: WiFi-Stick enters network configuration mode, Inverter's data collection is disabled.

Blue LED: Network communication indicator

- Blue LED turns off: Connection to the router fails. Please check if the network SSID and password are correct or the wireless signal intensity.
- Blue LED turns on: The device is now connected to the cloud, you could create a power plant on AiSWEI Cloud to monitor the parameters of the plant. (Please refer to the AiSWEI Cloud user manual for further details).
- Blue LED blinks: The device is not connected to the cloud. If the device has been connected to the router, please check whether the device has the permission to connect to the internet via the configuration page of the router.

Note: For AP network configuration work, you need to be connected to the local WLAN network of the device (AiSWEI-XXXX) to reenter the router information. The password for the local WLAN network would be the registration key, which could also be found on the type label. (Please refer to the App user manual for further details on network configuration).

Warranty

Thank you for purchasing the WiFi-Stick product from AiSWEI New Energy Technology (Jiangsu) Co., Ltd. Please keep this warranty card carefully, so that you could enjoy our full-service benefits.

Filled in by the customer:

Customer name		Contact person	
Product name		Purchase date	
Serial number			
Contact number			
Address			
Order number			
Service information	Date	Description of issue and measure	

Warranty description

Please send the faulty device and warranty card together back to AiSWEI service center. The shipping cost will be covered by the customer.

Note

1. From the date on the purchasing invoice, any quality issue which happens within warranty period will be fully covered by the warranty.
2. The warranty does not cover damages that occur due to incorrect installation, commission, inappropriate storage and other unreasonable factors.

Contact

AiSWEI New Energy Technology(Jiangsu)Co., Ltd.
Hotline: +86 400 801 9996 (Mainland)
+886 809 089 212 (Taiwan)
Service email: service.china@aiswei-tech.com
Web: www.aiswei-tech.com
Add.: No. 198 Xiangyang Road, Suzhou 215011, China

Qualification Certification

This product has passed the factory quality check control