

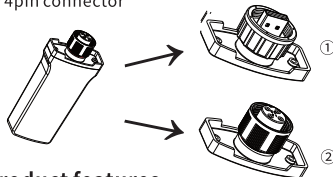
WiFi-Stick

Product Introduction

WiFi-Stick is a wireless communication module developed by AISWEI. It will collect the operating data of the inverters and upload the data to the cloud.

According to the connection with the inverter, there are two types of WiFi-Stick:

- ① USB
- ② 4pin connector

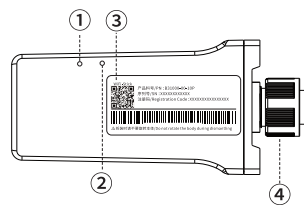


Product features

- Remote firmware update
- Network diagnosis
- LED indicators
- Plug-in connector
- Automatic resumption of data transmission once network recovering
- IP65 Protection Class

User Manual

Product Manual



- ① Green LED: Indicator for inverter communication
- ② Blue LED: Indicator for network communication
- ③ Type label: Product information
- ④ Connector: Connection to the inverter

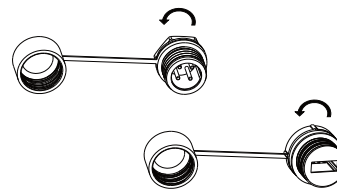
Note: LED will only start working after power on.

Delivery List

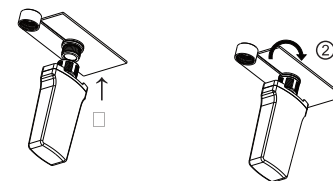
No.	Name	Quantity
1	WiFi-Stick	1
2	User Manual	1

Installation Guide

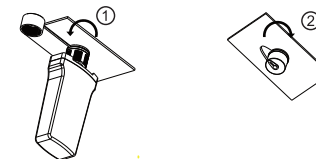
Please remove the anti-dust cap of the connector on the inverter by rotating anti-clockwise.



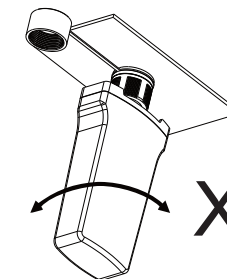
Insert the WiFi-Stick to the connector on the inverter. Rotate the nut on the WiFi-Stick clockwise and tighten it, as shown in the figure on the right.



When removing the WiFi-Stick from the inverter, please unscrew the nut anti-clockwise as shown in the figure below. After removing, please reattach the anti-dust cap on the inverter connector to ensure protection class.



Caution: Please do not rotate the WiFi-Stick main body during installation.



Note: Install the inverter within 20m of the router to ensure good signal.

Plant Monitoring

App download

Download the Solplanet App by scanning the QR code below.



iOS



Android

Network configuration

Connect the WiFi-Stick to the inverter and turn on the DC-switch of the inverter. Check that the green LED light is on and the blue LED light is off. Open the APP, register an account and log in, click the + button at the bottom and select configuration parameters, scan the QR code on the data acquisition stick to enter the network configuration.

Note: Only support network with 2.4GHz bandwidth.

Account registration and plant creation

Open the Solplanet App and register a new account. After completing the account registration and logon, click on the "+" icon to create plant. Please refer to the App user manual for further details.

LED indicators and troubleshooting

Green LED: Inverter communication indicator

- Green LED turns off: Hardware fault, please contact our service.
- Green LED blinks slowly: Green LED blinks slowly every 10 seconds, the communication between WiFi-Stick and inverter is Ok.

Blue LED: Network communication indicator

- Blue LED turns off: Connection to the router fails. Please check if the network SSID and password are correct or the wireless signal intensity.
- Blue LED turns on: The device is now connected to the cloud, you could create a power plant on AISWEI Cloud to monitor the parameters of the plant. (Please refer to the AISWEI Cloud user manual for further details).
- Blue LED blinks: The device is not connected to the cloud. If the device has been connected to the router, please check whether the device has the permission to connect to the internet via the configuration page of the router.

Note: For AP network configuration work, you need to be connected to the local WLAN network of the device (AISWEI-XXXX) to reenter the router information. The password for the local WLAN network would be the registration key, which could also be found on the type label. (Please refer to the App user manual for further details on network configuration).

Warranty

Thank you for purchasing the WiFi-Stick product from AISWEI Technology Co., Ltd. Please keep this warranty card carefully, so that you could enjoy our full-service benefits.

Filled in by the customer:

Customer name		Contact person	
Product name		Purchase date	
Serial number			
Contact number			
Address			
Order number			
Service information	Date	Description of issue and measure	

Warranty description

Please send the faulty device and warranty card together back to AISWEI service center. The shipping cost will be covered by the customer.

Note

1. From the date on the purchasing invoice, any quality issue which happens within warranty period will be fully covered by the warranty.
2. The warranty does not cover damages that occur due to incorrect installation, commission, inappropriate storage and other unreasonable factors.

Contact

EMEA
Service email: service.EMEA@solplanet.net

APAC
Service email: service.APAC@solplanet.net

LATAM
Service email: service.LATAM@solplanet.net

Aiswei Greater China
Service email: service.china@aiswei-tech.com
Hotline: +86 400 801 9996

Taiwan
Service email: service.taiwan@aiswei-tech.com
Hotline: +886 809089212

<https://solplanet.net/contact-us/>

Qualification Certification

This product has passed the factory quality check control